



# QualitySoft

Company Profile





# Quality work brings quality to life.

*Growing into a company that contributes to creating a prosperous world*



QualitySoft Corporation  
CEO Kiyoharu Ura

## Our vision

---

Since founding QualitySoft Corporation in 1984, we have always taken on new challenges. As a pioneer of IT asset management software vendors, we began providing “QND Plus” in 1998, and, anticipating the growth of cloud computing, we began providing a cloud-based IT asset management service, “ISM CloudOne”, in 2007. By realizing a safe work environment without compromising user experience, our customers have spread worldwide over the past decades.

With the evolution of technology, people can now work anywhere, anytime without being constrained by their workplace or working hours. The number of companies encouraging telecommuting has unquestionably increased, and people’s work styles are changing. With the cyber security technology we developed over the years, we promise to improve our cloud services to empower whatever work styles our users choose.

Also, in order to continue providing values in the rapidly changing society, it is necessary to create innovation by bringing people with diverse ideas together and putting the ideas into shape. To offer a place to confront challenges with different perspectives, QualitySoft provides INNOVATION SPRINGS, a “fountain full of innovation”.

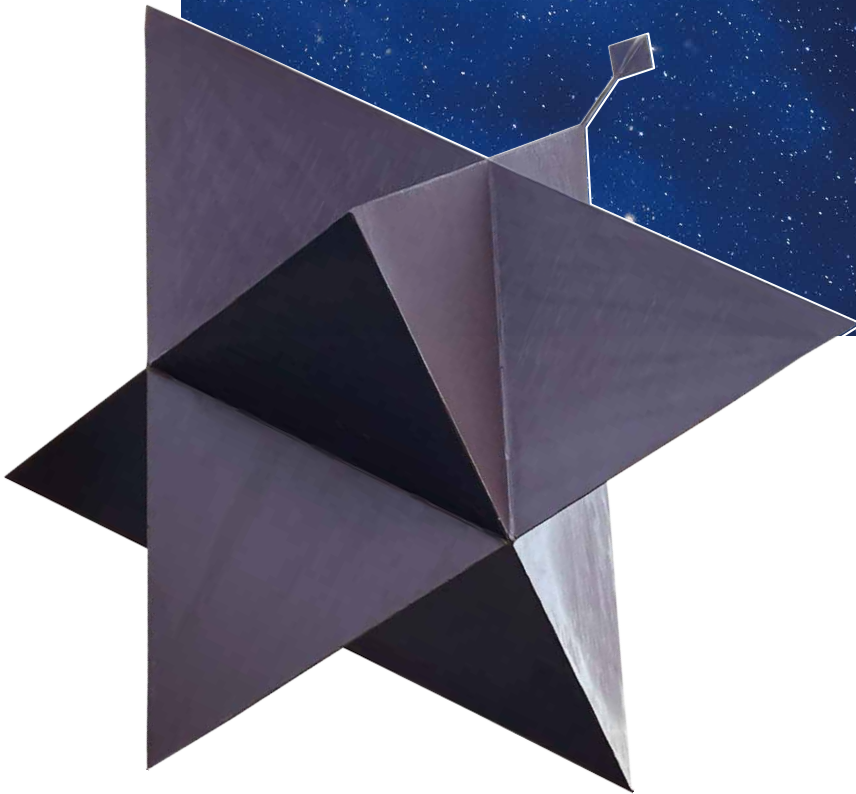
With INNOVATION SPRINGS at its core, we will continue to assist customers and contribute to creating a prosperous world.

# Quality Polaris Merkaba

The compass guiding  
us to be a  
centenarian company



Quality  
Polaris Merkaba



**Visualization**

**Challenge**

**Integrity**

**Genuine**

**Purpose**

Enrich the world  
with INNOVATION SPRINGS

**Approach**

The Cloud Company

**Work style**

“Quality Style”

**Philosophy**

Contribution and growth

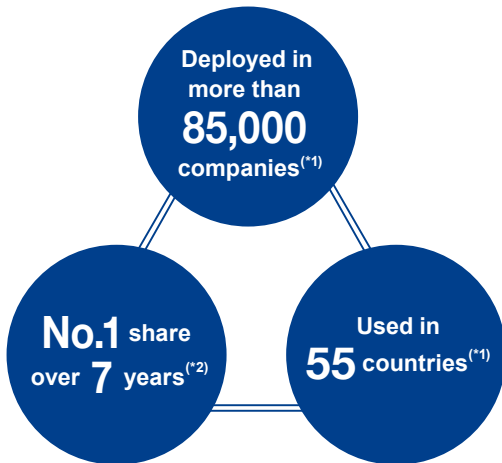


The “Polaris Merkaba” is represented by a star-shaped octahedron (a “merkaba”) that is formed by fusing an upward tetrahedron, indicating the direction the organization is headed, and a downward tetrahedron, indicating the force exerted by our members. It always moves in the same direction, just as a needle of compass points to the North Star (Polaris) no matter what obstacles come into its path.

We named the shape “Quality Polaris Merkaba” - the compass that directs us to become a centenarian.

# QualitySoft empowers the way people work with the potential of software

## Cloud-based endpoint security

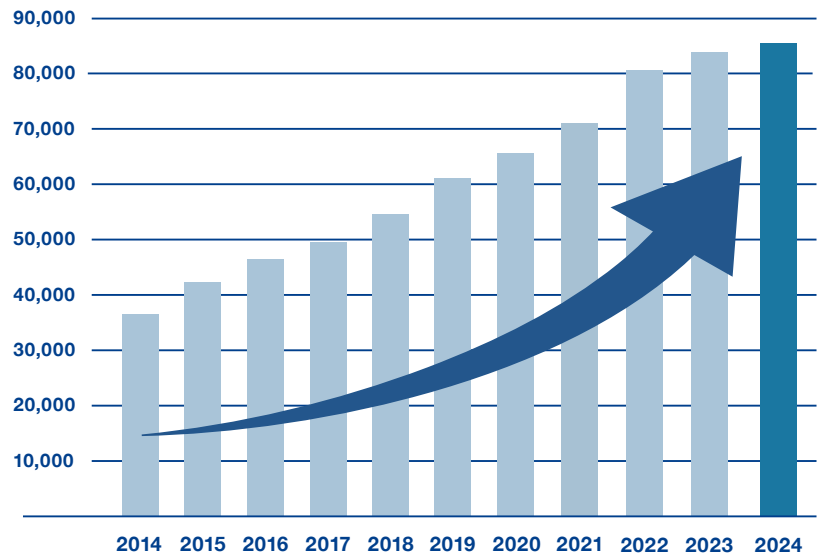


\*1 As of February, 2024

\*2 Deloitte Tohmatsu MIC Research Institute Co., Ltd.

"Current Status and Future Outlook of Internal Threat Countermeasure Solution Market (2022)"

## Sales history of ISM CloudOne



**ISM CloudOne**  
**ISM CloudNative**  
**ISM LogAnalytics**

*KeyServer*  
*QND*



Cloud Native Computing Foundation (CNCF), founded in 2015, is a project of the Linux Foundation aiming to advance container technology and align the technology industry around its evolution.  
 As a member of CNCF, QualitySoft contributes to developing cloud native technologies in Japan.

## Product transition

---

Since the release of the license management software, KeyServer, in 1993, we have strived to be a software company who can provide services that truly satisfy our customers. QND Plus, released in 1998, was the first in-house developed product that distributed KeyServer and had an IT asset management feature. The pioneering QND Plus of the IT asset management software has been leading the market with a total of more than 4.4 million clients deployed around major companies.

In 2007, anticipating the expansion of the cloud market, we released the cloud-based endpoint security service, ISM CloudOne, and in November 2023, we released ISM CloudNative, a next-generation cloud service that assists in solving social issues and was developed by bringing together the latest technologies to maximize the performance of cloud computing.

## Empowering people's work styles

---

Our products have evolved from an IT asset management tool to information leakage countermeasures and an endpoint security service. Until recent years, we have focused on developing software for network system administrators to readily manage company-owned devices and infrastructure, but people's work styles have rapidly diversified due to changes in social background.

Because of the declining birthrate and aging population, it is important to create an environment where people can work and communicate no matter where they are to maintain the workforce.

We are redirecting our product design to maximize the benefits of the cloud platform and accelerate the provision of software that supports the lifestyle of workers while ensuring information security. From now on, while keeping the original features of former products, we will develop software that improves the convenience and productivity of people who use the endpoint devices. We will also provide all software services from our new cloud platform.

*Empower the Way People Work*

# *Empowerment*





# INNOVATION SPRINGS

...where we gather and scintillate with ideas



## Projects at INNOVATION SPRINGS

One of QualitySoft's goals is to create a synergy for innovation in our community by addressing local challenges and contributing to the community's maturity. INNOVATION SPRINGS projects aim to gather people with diverse backgrounds and solve issues in ever-creative ways.

### IS Academy / Event

**Educating the next-generation and creating opportunities for the community**

We often invite experts from various fields to give lectures or hold study sessions to create opportunities for people to interact and collaborate, and to educate the next generation to foster a central role in the community. We also plan events, such as live music by local artists, exhibitions of paintings, photographs, and calligraphy, and small markets.



### Green project

**Creating a space full of flowers and plants for healing and imagination**

We create spaces where people can work while enjoying the surrounding nature, which will inspire their creativity. We have flower beds with seasonal flowers and clear the path to the Goshikigahama beach for anyone to freely stroll.





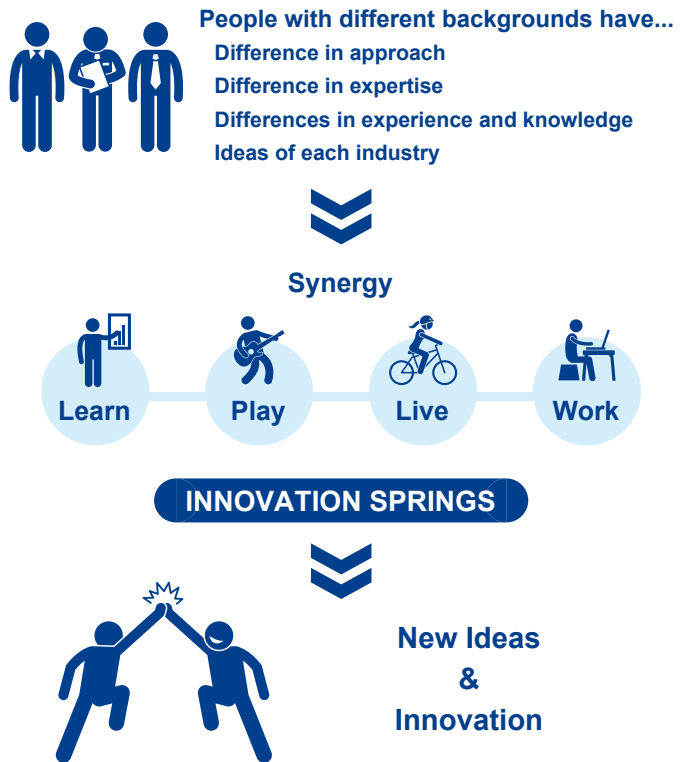


INNOVATION SPRINGS with a vast area of 59,000 m<sup>2</sup>

As the headquarters of QualitySoft Corporation, we aim to make INNOVATION SPRINGS a place where people can gather and interact freely with each other.

The purpose of INNOVATION SPRINGS is to bring about synergy to create new things by combining the ideas of people from various backgrounds.

### Innovation with synergy of all forces



Visit INNOVATION SPRINGS website



## Accommodation / Coworking room

### Providing a place for fruitful discussion

We have 10 rooms for accommodation, two seminar rooms, and two coworking rooms suitable for corporate training camps or discussion sessions for students or for any groups.



Spacious accommodation of 33 m<sup>2</sup>  
(10 two-bedrooms)



Seminar room  
Cap. 80 to 100 persons (2 rooms)



Coworking room A  
Cap. 20 persons



Coworking room B  
Cap. 10 persons

## Employee cafeteria “Quali-Tei” / Tamana Shokudo

### Disseminating dietary education at our cafeteria

We serve meals cooked with local ingredients and finely selected Japanese rice across the country as “Quali-Tei” on weekdays, and we serve macrobiotic foods as “Tamana Shokudo (dining)” for food enthusiasts on weekends. Though Quali-Tei is mainly for our employees, we also open it to the general public to spread proper dietary information for the local community.



# Engaging in social activities and providing values only possible with QualitySoft

## Drone business

### ANNOUNCER DRONE at site

In case of emergency, our ANNOUNCER DRONE can quickly assess the situation of affected areas and convey messages in multiple languages from the air. Mounting the specially designed piezoelectric speaker, the drone ensures clear audio and long flight time.



### Drone programming

We provide teaching material that allows students to actively engage in learning programming by flying a drone. It is compatible with Python and visual programming.



Listen to our piezoelectric speaker



## 🌸 たまな商店

### Food sustainability with “Tamana shop” - Vitalize Japan with the power of food -

To support the primary sector of the local economy, we launched “Tamana shop”, which offers organic food that is not only delicious but also friendly to people and the environment, and host a “Tamana class”, which is a learning place about food and health.

Our products are available at the Tamana shop website, the hometown tax refund gift of Shirahama, Amazon, and Rakuten Ichiba.



Visit Tamana shop website



## PCNW

### PC / Network (PCNW) meeting

PCNW is a workshop for system administrators to gather information, to discuss issues on system management, and to educate human resources in the IT department. We hold study sessions on IT trends and client management, as well as other events, to solve the issues and problems faced by system administrators.



Visit PCNW website



## Challenge 48

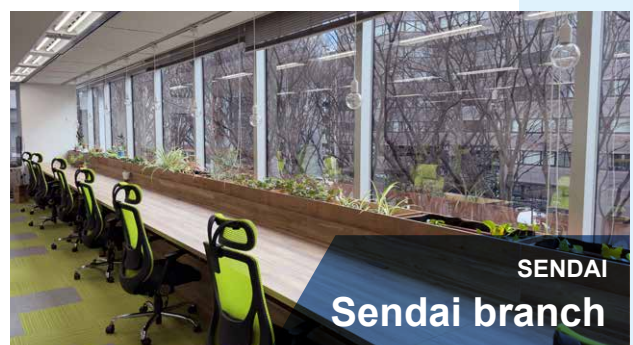
### - 48 hours of voluntary activities per year -

Challenge 48 allows employees to use 48 hours of their annual working hours for activities other than their own work. They can use the time for any voluntary work for the community or for assisting other teams in the company. Not only is it to foster interactions among employees, but it also forms a strong bond with the local people, which allows us to gain new insights about the community. We also improve our concentration and creativity by refreshing our minds in nature.





# Company Locations



# Company History



And our journey goes on...



# Company Profile

<b>Company name</b>	<b>QualitySoft Corporation</b>
<b>Business description</b>	Development and sales of cloud services and packaged software products Drone solutions Other
<b>CEO</b>	Kiyoharu Ura
<b>Founded</b>	February, 1984
<b>Location</b>	Headquarters 1701-3 Naka, Shirahama-cho, Nishimuro-gun, Wakayama 649-2333 TEL: +81-739-45-1001 (General administration) FAX: +81-739-45-1008  Tokyo office 6F KDX Kojimachi Building, 3-3-4 Kojimachi, Chiyoda-ku, Tokyo 102-0083 TEL: +81-3-5275-6121 (General administration) FAX: +81-3-5275-6130
<b>Capital</b>	112 million yen
<b>Total employees</b>	181 (as of April, 2024)
<b>Group company</b>	<b>System Intelligent Corporation</b> Location: 1-29-4 Nihonbashi Kashigara-cho Tokyu Building Nihonbashi Kakigara-cho, Chuo-ku, Tokyo  <b>Quality Cloud Corporation</b> Location: 6F, KDX Kojimachi Building, 3-3-4 Kojimachi, Chiyoda-ku, Tokyo  <b>QualitySoft (Shanghai) Corporation</b> Location: Rm. H, 27F, Hi-Tech King World (E), #668 Beijing Rd (E), Shanghai, China
<b>Participating groups (excerpt)</b>	The Linux Foundation Cloud Native Computing Foundation (CNCF) Association for Junior IT Engineer Program IT Business Forum Japan Computer System Seller Association (JCSSA) Japan Telework Association Made in Japan Software & Service Consortium (MIJS) Miyagi Information Service Industry Association The Research Institute of Information Security Software Association of Japan (SAJ) Wakayama Information Development Association (WIDA) Wakayama Information Technology Service Industry Association (WAKASA) Wakayama IT Educations (WITE)



# Business Partners

AXLBIT, Inc.  
 Canon Marketing Japan Inc.  
 Cybernet Systems Co.,Ltd.  
 DAIKO DENSHI TSUSHIN, LTD.  
 DAIWABO INFORMATION SYSTEM CO., LTD.  
 Fujitsu Fsas Inc.  
 Hitachi Solutions, Ltd.  
 Hitachi Systems, Ltd.  
 IBC Co.,Ltd.  
 KDDI Asia Pacific Pte Ltd  
 KDDI CORPORATION  
 Material Automation (Thailand) Co., Ltd.  
 Network Corporation

NRI SecureTechnologies, Ltd.  
 Oki Electric Industry Co., Ltd.  
 ORIX Rentec Corporation  
 OTSUKA CORPORATION  
 SB C&S Corp.  
 SOFTCREATE CORP.  
 SOHGO SECURITY SERVICES CO.,LTD. (ALSOK)  
 Sony Biz Networks Corporation  
 STAR-NET Co., Ltd.  
 Tokei Densan Co., Ltd.  
 Toshiba Digital Engineering Corporation  
 UNIADEx, Ltd.

## QualitySoft Corporation

Headquarters	1701-3 Naka, Shirahama-cho, Nishimuro-gun, Wakayama 649-2333 TEL: +81-739-45-1001 FAX: +81-739-45-1008
Tokyo office	6F KDX Kojimachi Building, 3-3-4 Koji-machi, Chiyoda-ku, Tokyo 102-0083 TEL: +81-3-5275-6121 FAX: +81-3-5275-6130
Western Japan branch	8F Nissei Bingocho Building, 1-7-10 Bingo-cho, Chuo-ku, Osaka-shi, Osaka 541-0051 TEL: +81-6-6125-2161 FAX: +81-6-6125-2170
Sendai branch	4F Sendai Jozenji Building, 3-4-33 Kokubun-cho, Aoba-ku, Sendai-shi, Miyagi 980-0803 TEL: +81-22-796-8082 FAX: +81-22-796-8083
Matsumoto R&D Center	5F Matsumoto Kuranomachi Building, 3-3-16 Chuo Matsumoto-shi, Nagano 390-0811 TEL: +81-263-87-5413
Nagoya office	4F Nagoya Nikko Shoken Building, 3-2-3 Sakae, Naka-ku, Nagoya-shi, Aichi 460-0008 TEL: +81-52-269-8734 FAX: +81-52-269-8735



Visit QualitySoft intro movie